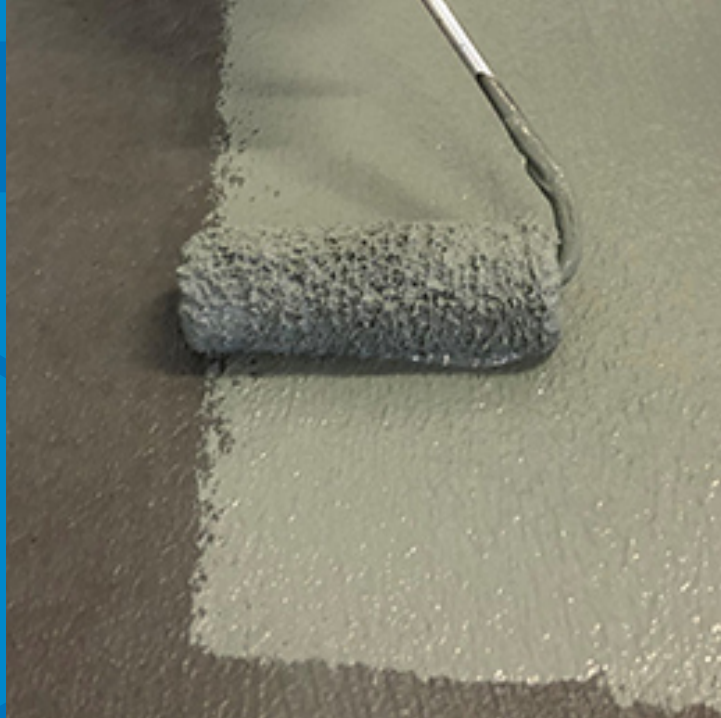


MAPEGUARD WP 2K MEMBRANE

Two-component, cementitious membrane, fast-curing and flexible, for waterproofing wet rooms and shower facilities



WHERE TO USE

Quick-drying cementitious membrane for use on walls and floors in wet rooms. Can be used on all substrates suitable for wet rooms (plasterboard, wet room panels, putty, concrete).

Examples of use

- Waterproofing of wet rooms/bathrooms and showers before laying tiles, mosaics or natural stone on floors or walls.

BENEFITS

- Ready for tiling after approx. 3 hours under normal temperature conditions after last application.
- For all types of panels suitable for use in wet rooms.
- Tested and approved according to ETA/EAD.
- Also suitable for overlaying existing ceramic, and under all types of mosaic and natural stone floor and wall coverings.

TECHNICAL CHARACTERISTICS

Mapeguard WP 2K Membrane is a two-component, cementitious membrane with selected fine-grained aggregates, special additives and synthetic polymers in water dispersion.

Mapeguard WP 2K Membrane is the product of Mapei's research laboratories, which developed a special polymer that shortens the drying time for **Mapeguard WP 2K Membrane**.

When the two components are mixed together they form a quick-drying fluid mix with good workability. It is applied in two coats with a broom, roller or trowel.

Mapeguard WP 2K Membrane also has excellent adhesion to most surfaces – such as concrete and cementitious screeds as well as ceramics, mosaics, natural stone, terrazzo, wet room tiles and gypsum – provided that these surfaces are firmly attached to the substrate and prepared as specified.

Mapeguard WP 2K Membrane has been tested and meets the requirements according to EAD 030352-00-0503 "Liquid applied watertight covering kits for wet room floors and/or walls".

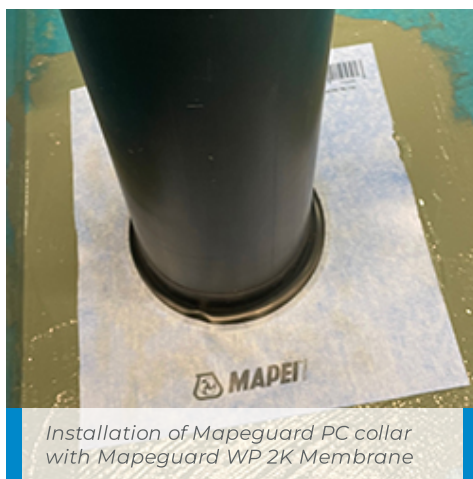
RECOMMENDATIONS

- Do not use **Mapeguard WP 2K Membrane** in thick layers.
- Apply **Mapeguard WP 2K Membrane** only at temperatures above +5°C.
- Do not add cement, aggregate or water to **Mapeguard WP 2K Membrane**.
- Do not apply **Mapeguard WP 2K Membrane** on unstable surfaces.

- Do not apply **Mapeguard WP 2K Membrane** on substrates that have not hardened as specified.

Mapeguard WP 2K Membrane has been tested and approved for use with the following products:

Tape:	<ul style="list-style-type: none"> Mapeguard ST Mapeband Easy
Adhesive tape:	<ul style="list-style-type: none"> Mapeband BT
Gaskets:	<ul style="list-style-type: none"> Mapeguard PC 10-24 Mapeguard PC 15-38 Mapeguard PC 28-50 Mapeguard PC 32-55 Mapeguard PC 50-75 Mapeguard PC 75-110 Mapeguard PC 100-130 Mapeguard WC
Drain gaskets:	<ul style="list-style-type: none"> Mapeband B DC 37x37 cm Mapeband B DCL 37x120 cm
Adhesive:	<ul style="list-style-type: none"> Mapeflex MS 45
Primers:	<ul style="list-style-type: none"> Primer G adhesive primer Eco Prim T Plus adhesive primer Primer VT Plus $S_d > 10$



APPLICATION PROCEDURE

Preparing the substrate

- CEMENTITIOUS SCREEDS:**
 - Use **Mapepoxy BI-IMP** to seal cracks caused by settling of the screed or hygrometric shrinkage before applying the product.
 - The substrate must be dry, clean and free of grease or other impurities that could reduce adhesion to the substrate.
 - Prime the substrate with an adhesive primer **Primer G**, **Eco Prim T Plus** or **Primer VT Plus** if you need an S_d value of more than 10 m.
 - Allow the primer to dry and then apply one coat of **Mapeguard WP 2K Membrane**.
 - All details, such as **Mapeguard ST**, **EC/IC** or **Mapeband Easy – BT** and gaskets such as **Mapeguard PC** can be installed with **Mapeguard WP 2K Membrane** both before or after two layers of **Mapeguard WP 2K Membrane**.
- EXISTING FLOOR AND WALL COVERINGS:**
 - Existing ceramic, stone, terracotta etc. floor and wall coverings must be well bonded to the substrate and must be completely free of substances that could affect adhesion, such as grease, oil, wax, varnish etc.

Mapeband ST, **Mapeband Easy** and **Mapeband BT** are used for waterproofing of corner joints between horizontal and vertical joints. **Mapeband B DC / B DCL** to seal around drains, both with and without compression fittings. Where there is a compression fitting on the drain, **Mapeguard WP 2K Membrane** must be applied on the fleeces surface of the gasket before mounting the compression fitting.

Preparation of the membrane

Pour approx. $\frac{3}{4}$ of component B in a clean mixing vessel, and sprinkle in the powder (component A) while stirring. Mix with a drill and whisk at low speed until it is a lump-free and even mass. Add the last $\frac{1}{4}$ of component B and mix (at least three minutes). Do not add water, aggregate or cement to **Mapeguard WP 2K Membrane**.

For this operation, we recommend using a mechanical mixer at low speed to prevent too much air from entering the mixture. Avoid mixing the product manually.

Application of the membrane

Mapeguard WP 2K Membrane stays ready for use in the container for approx. 60 - 75 minutes. After the surface is prepared, apply a thin layer of **Mapeguard WP 2K Membrane** with a broom, roller or trowel. After the first layer of **Mapeguard WP 2K Membrane** has cured (about 30 - 45 minutes in favourable weather conditions), apply a second coat with a roller or trowel.

Laying tiles

After applying **Mapeguard WP 2K Membrane** wait approx 3 hour before installing tiles.

CLEANING

Because of the high adhesion of **Mapeguard WP 2K Membrane**, including on metals, we recommend cleaning tools with water before the mortar starts to set. Once hardened, cleaning must be carried out mechanically.

CONSUMPTION

Two layer of 0,750 kg gives 1,5 kg in total for 1 mm dryfilm thickness per m².

Note: The consumption figures indicated are for a seamless layer on a flat surface and are higher if applied on uneven substrates. For other detailed information, please refer to the national regulations for **Mapeguard WP 2K Membrane**.

PACKAGING

26 kg set (A+B)

Component A: 16 kg sack.
Component B: 10 kg drum.

12.8 kg set (A+B)

Component A: 2 x 4 kg sacks.
Component B: 4.8 kg drum.

STORAGE

Mapeguard WP 2K Membrane component A 16 kg paperbag may be stored for 12 months in its original packaging in a dry place.

Mapeguard WP 2K Membrane comp. A 4 kg alupack and comp. B 4.8 and 10 kg plastbuckets can be stored for 24 months.

Mapeguard WP 2K Membrane must be stored dry and at a temperature of at least +5°C.

SAFETY INSTRUCTIONS FOR PREPARATION AND INSTALLATION

Instructions for the safe use of our products can be found on the latest version of the SDS available from our website www.mapei.no

PRODUCT FOR PROFESSIONAL USE.

TECHNICAL DATA (typical values)

PRODUCT DESCRIPTION

	Component A	Component B
Consistency:	powder	liquid
Colour:	light brown	white
Bulk density (g/cm ³):	1.3	–
Density (g/cm ³):	–	1.04

Dry solids content (%):	100	54
-------------------------	-----	----

APPLICATION DATA (at +20°C and 50 % RH)	
Colour of mix:	brown
Mixing ratio:	component A : component B = 1.6 : 1
Consistency of mix:	liquid
Density of mix (kg/m ³):	1,400
Application temperature range:	from +5°C to +35°C
Pot life of the mix:	approx. 60 - 75 min.
EMICODE:	EC1 Plus – very low emission

FINAL PERFORMANCES	
Initial adhesion according to EN 14891-A.6.2 (N/mm ²):	1.6
Adhesion after immersion in water according to EN 14891-A.6.3 (N/mm ²):	1.23
Adhesion after heat ageing according to EN 14891-A.6.5 (N/mm ²):	1.6
Adhesion after immersion in alkaline water according to EN 14891-A.6.9 (N/mm ²):	1.2
Water vapor resistance according to EN ISO 12572 at 93–50 % RH; 0.10 kg Primer G 2 x 0.75 kg Mapeguard WP 2K Membrane:	S _D 2.2 m
Water vapor resistance at 93–50 % RH; 2 x 0.30 kg Primer VT Plus 2 x 0.75 kg Mapeguard WP 2K Membrane	S _D ≥ 69m

WARNING

Although the technical details and recommendations contained in this product data sheet correspond to the best of our knowledge and experience, all the above - information must, in every case, be taken as merely indicative and subject to confirmation after long-term practical application: for this reason, anyone who intends to use the product must ensure beforehand that it is suitable for the envisaged application: in every case, the user alone is fully responsible for any consequences deriving from the use of the product.

Please refer to the current version of the technical data sheet, available from our web site www.mapei.no

LEGAL NOTICE

The contents of this Technical Data Sheet ("TDS") may be copied into another project-related document, but the resulting document shall not supplement or replace requirements per the TDS in effect at the time of the MAPEI product installation. For the most up-to-date TDS and warranty information, please visit our website at www.mapei.no

ANY ALTERATIONS TO THE WORDING OR REQUIREMENTS CONTAINED IN OR DERIVED FROM THIS TDS SHALL VOID ALL RELATED MAPEI WARRANTIES.

7560-1-2023-gb

Any reproduction of texts, photos and illustrations published here is prohibited and subject to prosecution.

